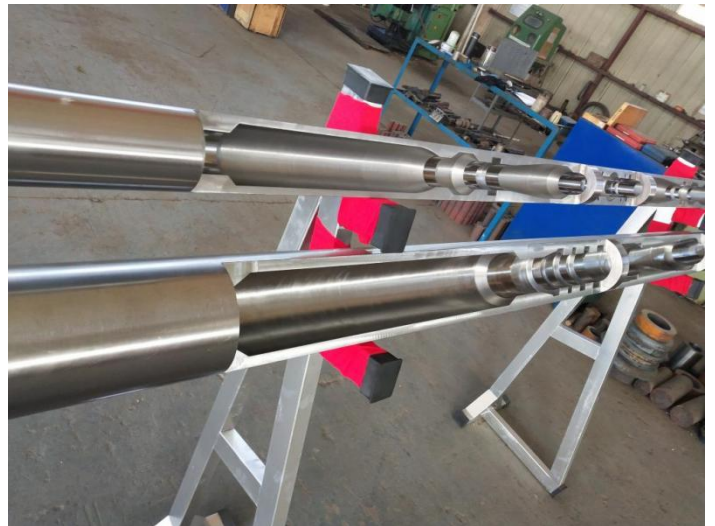
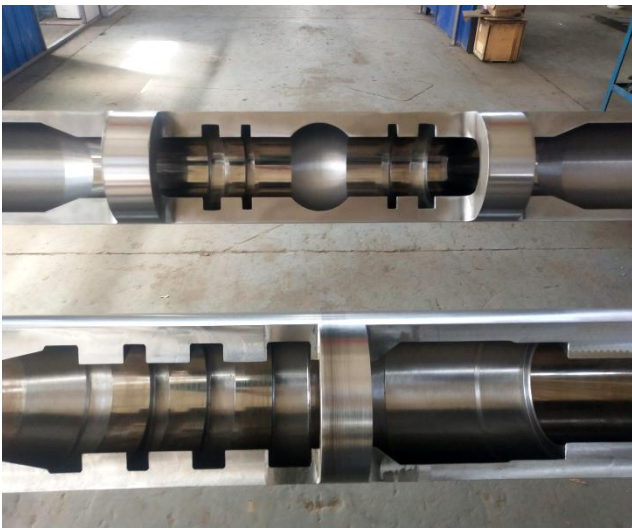


Service And Product Range

Deep Hole Cavity Technology Machining Service.....	2
STS BTA Deep Hole Drilling Head and insert pads.....	3
Sandvik Two pipe ejector drill head and insert and pad.....	5
Taegutec type deep hole drill head and insert.....	6
Counter boring head.....	6
Trepanning drill head and gundrill trepanning drill head.....	7
Skiving and rolling head.....	8
Deep hole honing head series.....	9
Gundrilling drilling head.....	10
GD-600Q Gun Drill Sharpening Machine (Deep Hole Drill).....	11
GD-450Q Saw blade grinder.....	13
Deep hole drilling machine.....	14
Deep hole honing machine.....	14
Deep hole gun drilling machine.....	14
Deep hole boring machine.....	14
Deep hole skiving and rolling machine.....	14

Deep Hole Cavity Technology Machining Service

- ✧ With more than many years of experience in deep hole area and manufacturing of deep-hole machine tools and tools, we have repeatedly tried and tested the experiments to overcome various difficult processing problems. The successful development of special deep-hole cavity machining technology has broken the deep hole cavity machining technology. Difficulties and bottlenecks in machining. Using our special cavity profile cutters and machine tools, we can machine high precision grooves, arcs, arc curvatures, tapers, etc. We can get complex hole contours, which are widely used in petroleum equipment. The application is widely praised by customers.
- ✧ You can send us workpiece drawing, we will arrange quote and technology communication.



STS BTA Deep Hole Drilling Head and insert pads

(SANDVIK TYPE)

Feature: short lead time, high quality, cutting tool body is Aviation pre hardening material!

Production Characteristics- Single pipe BTA DRILL HEAD

- ◇ it's our manufactured S type 25 mm -150mm BTA deep hole drilling head.
- ◇ It adopts high quality alloy steel material,with super coating inserts.
- ◇ carbide guide pads, high efficiency, easy install and low cost
- ◇ widely machining for different material





Drill bar



guide pad



inserts

Example 25-65mm list

Drilling head diameter	Central inserts	Qty	Intermiddle inserts	Qty	Peripheral inserts	Qty	Guide pad	Qty
25~28.7	800-050308M-C-G	1	800-050308M-I-G/L	1	800-060308H-P-G/L	1	800-06A	2
28.71~31.00	800-06T308M-C-G	1	800-050308M-I-G/L	1	800-060308H-P-G/L	1	800-06A	2
31.01~33.30	800-06T308M-C-G	1	800-060308M-I-G/L	1	800-08T308H-P-G/L	1	800-07A	2
33.31~36.20	800-08T308M-C-G	1	800-06T308M-I-G/L	1	800-08T308H-P-G/L	1	800-07A	2
36.21~39.6	800-08T308M-C-G	1	800-08T308M-I-G/L	1	800-08T308H-P-G/L	1	800-07A	2
39.61~43	800-08T308M-C-G	1	800-08T308M-I-G/L	1	800-09T308H-P-G/L	1	800-08A	2
43.01~47.00	800-10T308M-C-G	1	800-08T308M-I-G/L	1	800-09T308H-P-G/L	1	800-08A	2
47.01-51.7	800-10T308M-C-G	1	800-08T308M-I-G/L	1	800-11T308H-P-G/L	1	800-10A	2
51.71-56.2	800-10T308M-C-G	1	800-12T308M-I-G/L	1	800-11T308H-P-G/L	1	800-10A	2
56.21-59	800-10T308M-C-G	1	800-12T308M-I-G/L	1	800-11T308H-P-G/L	1	800-12A	2
60-65	800-12T308M-C-G	1	800-12T308M-I-G/L	1	800-11T308H-P-G/L	1	800-12A	2

BTA DRILL HEAD DIAMETER RANGE (S TYPE)mm	BTA DRILL HEAD DIAMETER RANGE (S TYPE)mm
25~28.7	60-65
28.71~31.00	65.1-68.39
31.01~33.30	68.4-73.49
33.31~36.20	73.5-79.99
36.21~39.6	80-82.69
39.61~43	82.7-90.49
43.01~47.00	90.5-98.99
47.01-51.7	99-106.99
51.71-56.2	107-120.00
56.21-59	120-125-150



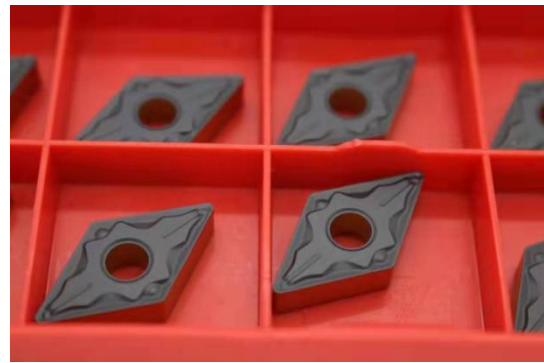
Welding pads

Sandvik Two pipe ejector drill head and insert and pad

- ✧ Compare with single tube BTA, Ejector ones have higher efficiency, Tube with super high strength alloy steel, more stable, especially machining for carbon steel, Alloy steel, Stainless steel.
- ✧ Drill head range : $\phi 25$ ----- $\phi 200$ mm

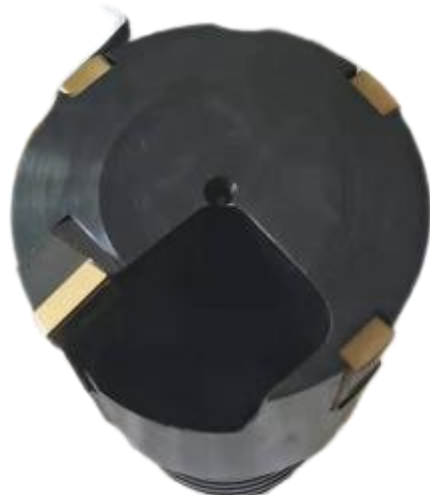


Taegutec type deep hole drill head and insert



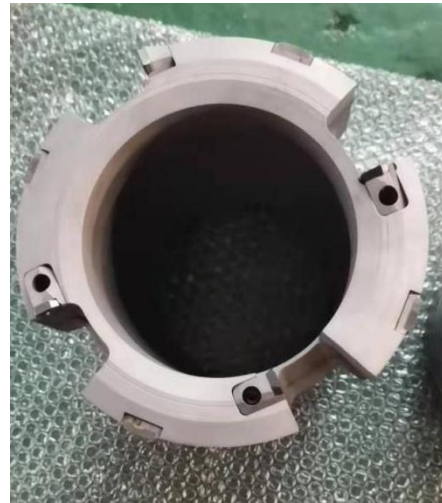
Counter boring head

- ✧ Counter boring tool, is single insert indexable deep hole machining tool, body of super quality alloy steel, long duration, with carbide coating insert, high working efficiency, can meet different requirements from clients
- ✧ Diameter range : $\varnothing 30$ ----- $\varnothing 500$ mm

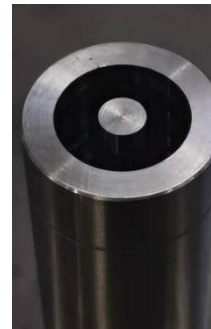


Trepanning drill head and gundrill trepanning drill head

- ✧ Trepanning tool, called Circle drilling tool, it can be machining with a hole in a solid bar, while get both the tube and inner bar, in order to reduce the cost and keep a good machining performance.
- ✧ According to different requirement, our factory can provide exact proposal for best machining.



Gundrill trepanning drill head



Skiving and rolling head

- ✧ The skiving roller burnishing tool belongs to a combined tool. It adopts a fully hydraulic expansion and contraction mechanism to realize the automatic control of the entire process of expanding, processing, retracting, and retracting, which is convenient and reliable.
- ✧ It can process seamless cold drawn pipes, welded cold drawn pipes, hot rolled steel pipes and cast steel pipes After the product is processed, its surface hardness increases by about 30%.
- ✧ The accuracy can reach above IT8 level, and the surface roughness can reach Ra0.05-0.2um.
- ✧ Processing materials: ordinary carbon steel, stainless steel, cast iron, copper, aluminum, titanium alloy and other materials
- ✧ Tool types: hydraulic and pneumatic
- ✧ Range : $\phi 40$ ---- $\phi 500$ mm



Deep hole honing head series

Feature :

- ◇ This honing head is suitable for cylinder deep hole fine machining, After machining roughness Ra 0.4-0.2um.
- ◇ Honing processing is an efficient processing method that enables the workpiece surface to achieve high precision, high surface quality, and long life. It can effectively improve dimensional accuracy, shape accuracy and reduce Ra value. It can process cast iron, hardened and non-hardened parts. Hardened steel parts and bronze parts, etc., honing is widely used in mass production to process cylinder bores, cylinder bores, valve bores and various barrels, etc.

Honing head size	Honing bar size
≥40-50	35
≥50-80	45
≥80-120	70
≥120-200	85
≥200-500	100

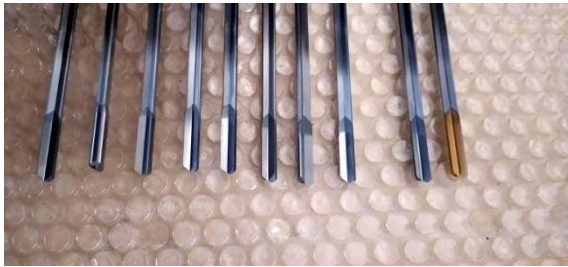


Gundrilling drilling head

We focus on gundrill production business.

Our gundrill carbide tip (brand ESTECH) is sourced from Switzerland, which gurantees the quality of the tool. Estech was founded in 1941, is a partner of botek. Our company invites famous cutting tool professors in this industry to instruct the reserach and development. With many years development, we have our own technique process. Our products are sold well in domestic market and overseas and are highly praised by our customers.

Our gundrills are high hardness, good rigidity, high accuracy, long lasting, and good cost performance.



- ✧ We supply high quality gundrilling drill head
- ✧ (1) brazed single blade gundrill drill head
- ✧ (2) Single flute solid carbide gundrill drill head
- ✧ (3) Indexable gundrill head

GD-600Q Gun Drill Sharpening Machine (Deep Hole Drill)

Capacity:ø3-38mm with 50Q attachment 1pc



Product patent no.:ZL 2011 2 0532609.2

GD-600Q grinding machine is suitable for deep hole drilling gun drill grinding angle;

And sharpening jig with, accurate and efficient grinding of various gun drill;

A fixture can complete all the sharpening angle.

GD-600 Standard gun drill sharpening machine adopt precision rolling track, high-speed motor. The motion is smooth and the friction is small. Grinder can rotate in horizontal and vertical plane. Widely applicable to machine tools with sharpening Fixture can be accurate and effective grinding a variety of gun drill.50Q Gun Drills Gun Drill Sharpening Fixture is specialized used in dedicated tooling the compact structure, of setup is reasonable and convenient, adjustment is simple, processing is time-saving(once setup to be completed by all angle grinding), the processing of drilling edge, high precision, good accuracy.



Product Description

Specifications	
Horizontal Travel of the Operating table	270mm
Longitudinal travel of the operating table	170mm
Area of the operating table	130*600mm
Elevating Distance of Wheel Head	140mm
Rotating Angle of Wheel Head	360°
Grinding Wheel Size	125*50*32mm
Speed of grinding Wheel	2800RPM
Power	550w 220v/380v
Packing size and weight	wood box 1: 79CMX66CMX67CM 173KG Paper box 2: 60CMX60CMX75CM 30KG

GD-450Q Saw blade grinder



- ❖ Grinding machine parameters:
- ❖ Saw blade grinding diameter: $\Phi 50-450\text{mm}$
- ❖ Tooth pitch: Maximum 25mm
- ❖ Tooth depth: Maximum 8mm
- ❖ Cutting angle: $0^{\circ}-30^{\circ}$
- ❖ Feed speed: 45-180
- ❖ Teeth/saw blade thickness: Maximum thick 8mm
- ❖ Use grinding wheel specifications: $\Phi 150*25\text{mm}$
- ❖ Grinding wheel speed: 4500rpm
- ❖ Grinding wheel motor: 3/4hp
- ❖ Drive motor: 1/2hp
- ❖ Net weight: 90kgs
- ❖ Gross weight: 110kgs

GD-450 Gear Grinding Machine: In order to solve the difficulties and inconvenience of saw blade grinding teeth for users and increase the utilization rate of saw blades, our company combined with foreign advanced technology to independently develop and produce this saw blade grinding machine, which greatly improves the circular saw The use cost and efficiency of the film.

Features of tooth-making/grinding machine:

1. Easy to operate and easy to learn, allowing novices to become professional technicians in a short period of time.
2. The cutting angle, tooth profile and tooth depth of the saw tooth can be changed according to different chip requirements, and it can easily grind sharp saw blades.
3. The saw blade materials that can be ground are: high-speed steel HSS, manganese steel Mn.
4. The outer diameter of the grinding saw blade is 100-450MM
5. The grinding time of the saw blade can be quickly adjusted according to different cutting requirements.
6. The machine head can be arbitrarily adjusted upward or downward, and the chamfer can be trimmed without changing the grinding wheel.
7. The end of the mechanical feed push claw is welded with tungsten carbide to reduce wear: the push arm has been improved and designed to ensure accurate feed.
8. After strict product control, this machine only needs routine maintenance to ensure grinding accuracy.

Machine :

Deep hole drilling machine

Deep hole honing machine

Deep hole gun drilling machine

Deep hole boring machine

Deep hole skiving and rolling machine

Detail : please contact me

Sally

Whatsapp 008613791327824

Email: precion-huyanjun@foxmail.com